

# KEY

Instruments	
	Source 4 19deg
	Source 4 26deg
	Source 4 36deg
	Source 4 50deg
	Alt 360Q 6x9
	Alt 360Q 6x12
	Alt 360Q 6x16
	PAR 64 MFL
	PAR 64 NSP
	4.5 25°-50° Zoom
	12" Fres
	6" Fres
	S4 PAR MFL
	Mac 600
	Studio Spot 575
	Studio Color 575
	Mac 500
	MAC2000 Profile
	Mac 2000 Wash
Accessories	
	10" Barn Door
	6.25" Color Scroller

# NOTES

- 2nd(A) Elec, 3rd(A) Elec and 4th (A) Elec are added electrics.
- All instruments are 18" apart, unless indicated otherwise.
- All instrument must be neatly circuited as there is no masking.
- All instruments on stage should be black, any white instruments should be Front of house or booms.
- All instruments on AP must have Top Hats.
- Final placement of set mounted and floor lights instruments would be determined by LD.
- All instruments require safety cables.
- Please drop gel and templates as they become available.
- See designer for Trim Height.
- Final Booms position would be determined by LD.

This Drawing Represents Design Intent and Concept  
 All specifications herein relate solely to the appearance of the lighting and not to matters of electrical or structural soundness and/or safety. The designer is not qualified to assess the electrical or structural appropriateness of the design. If any specifications are found to be incompatible with proper safety precautions, the designer shall make prompt modifications to the specifications in question.

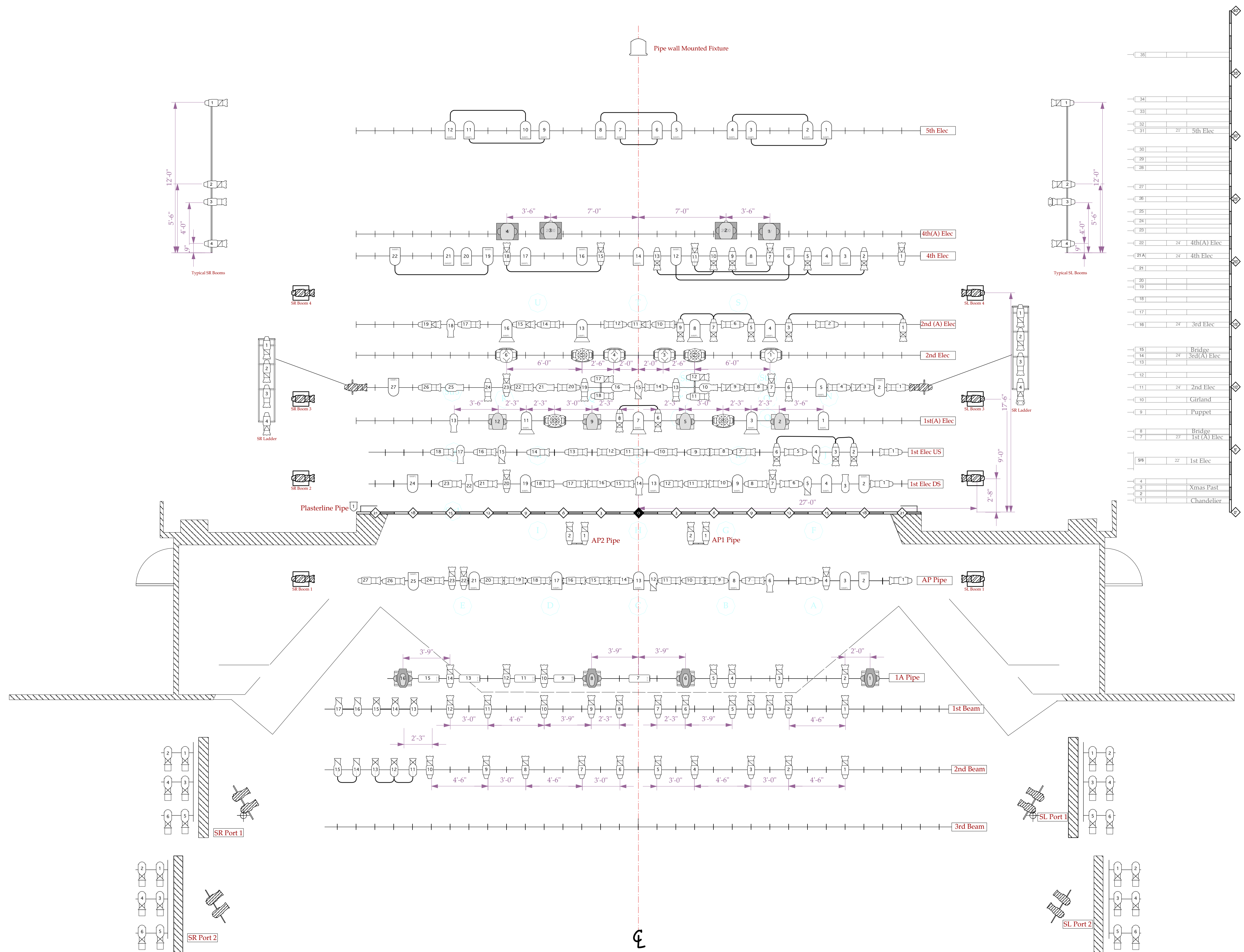


DIRECTED BY: BRAD CARROLL  
 SCENIC DESIGN BY: Dana Moran Williams  
 LIGHTING DESIGN: Marihan Mehelba  
 ALD: Erika Courtney  
 M.E: Jeff Johnson  
 RES. LIGHTING DESIGNER: Brackley Frayer  
 RES. MASTER ELECTRICIAN: Obadiah Harvey

**Version #1**  
**11/02/2009**

**PLOT**  
 SCALE: 1/4" = 1'-0"

PLATE #  
**1**  
 OF 2



ALL INSTRUMENTS ARE 18" APART UNLESS INDICATED OTHERWISE